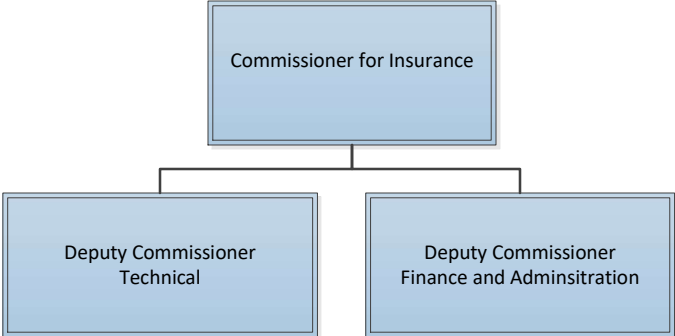
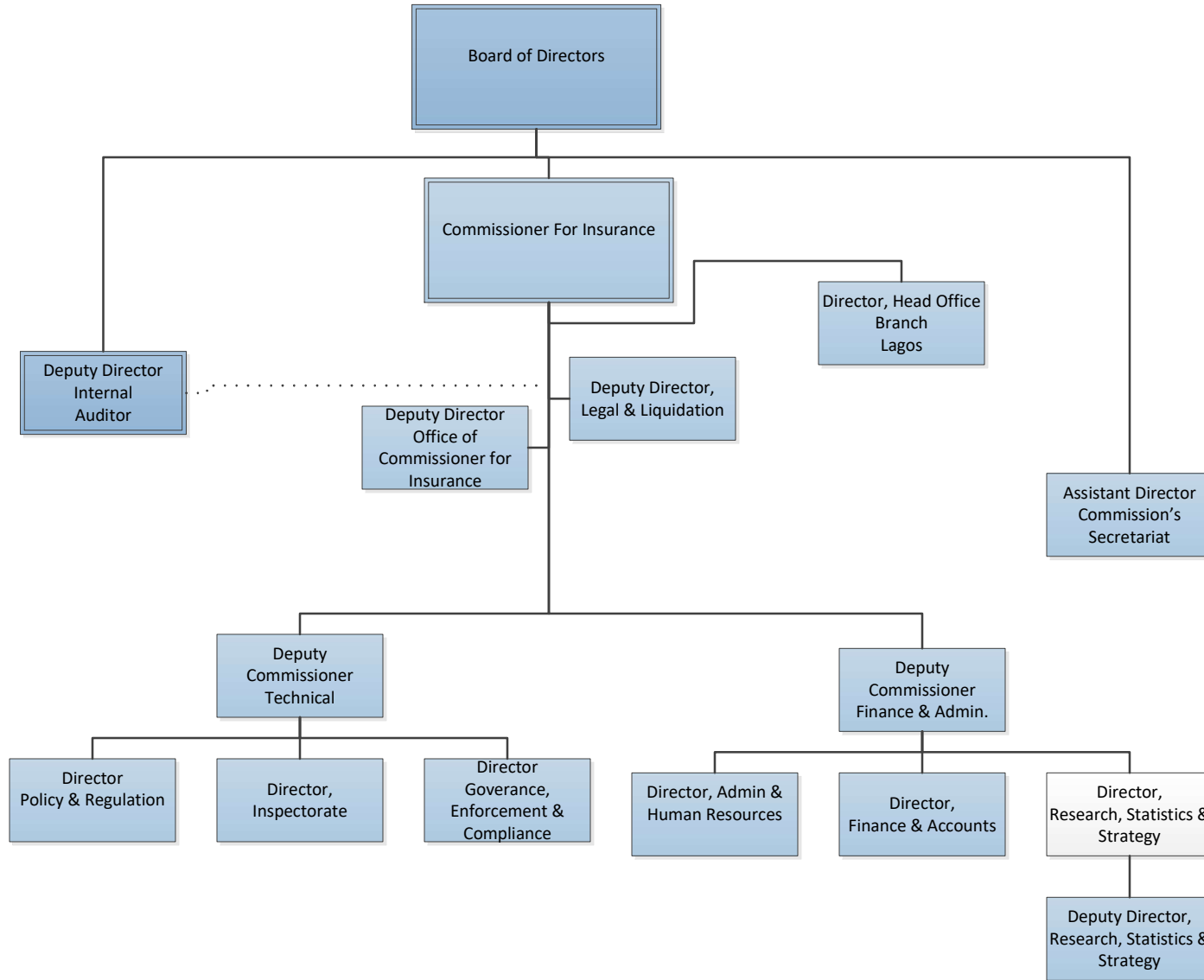


**NATIONAL INSURANCE COMMISSION
PROPOSED ORGANISATION STRUCTURE**

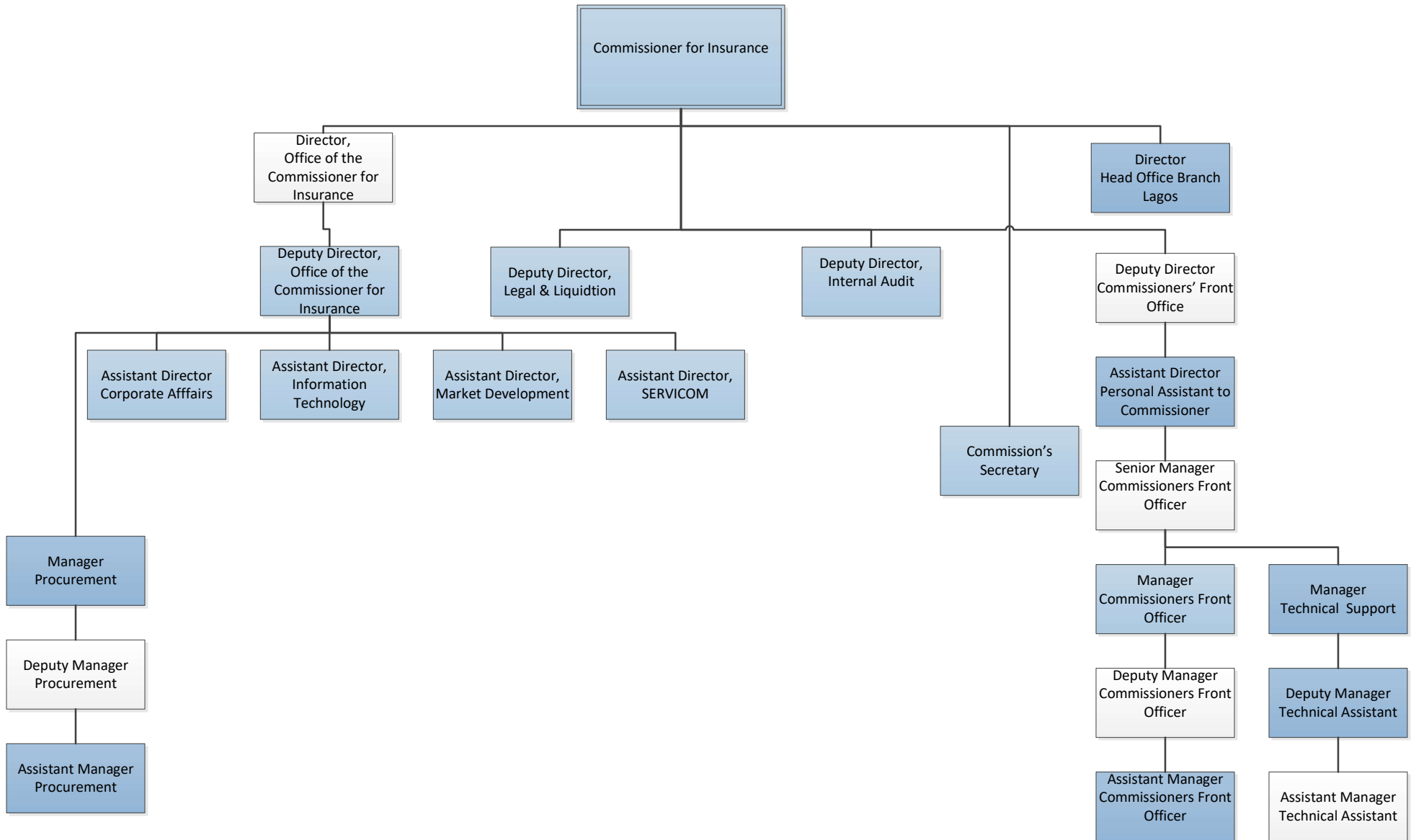
EXECUTIVE MANAGEMENT



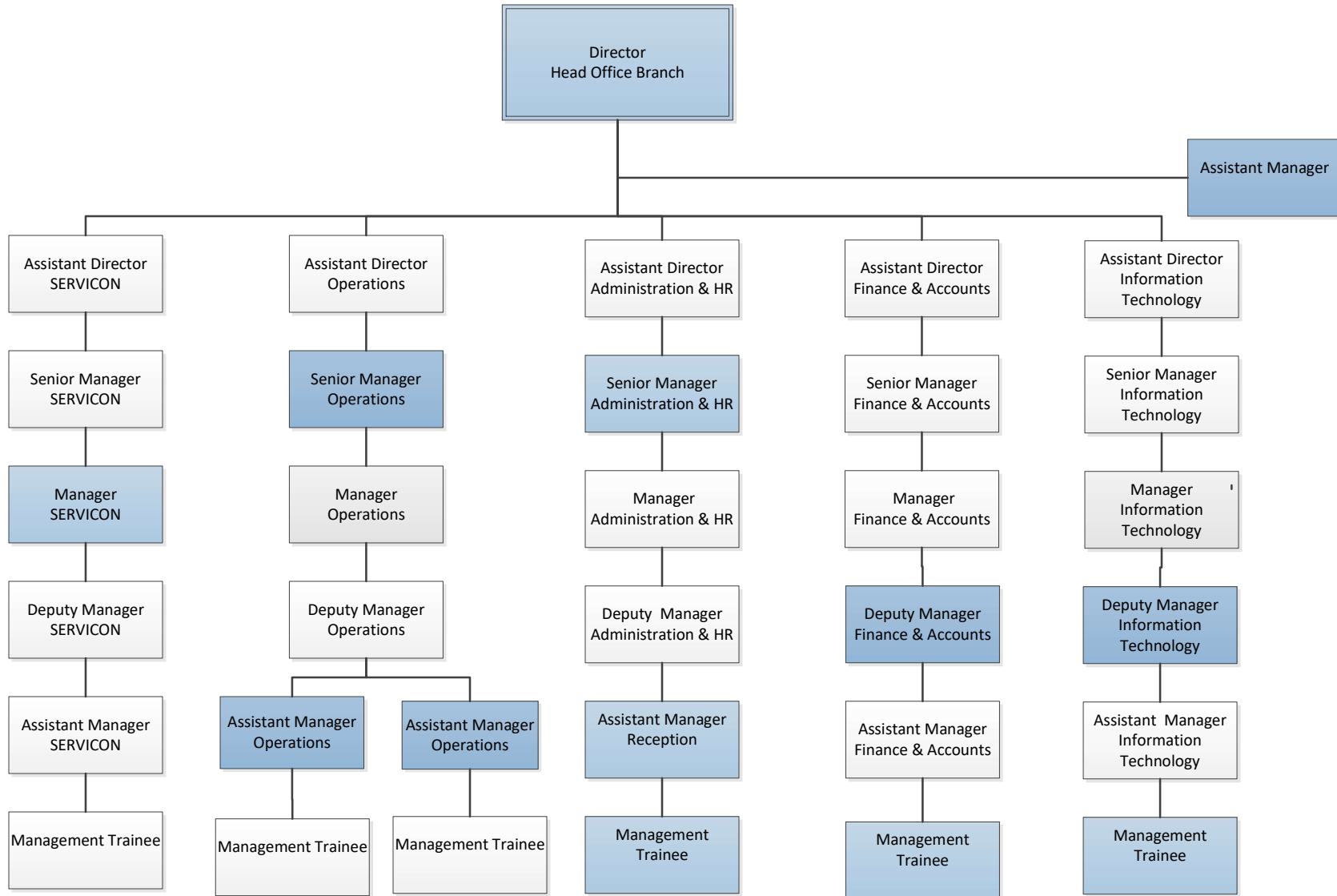
TOP MANAGEMENT



OFFICE OF THE COMMISSIONER FOR INSURANCE

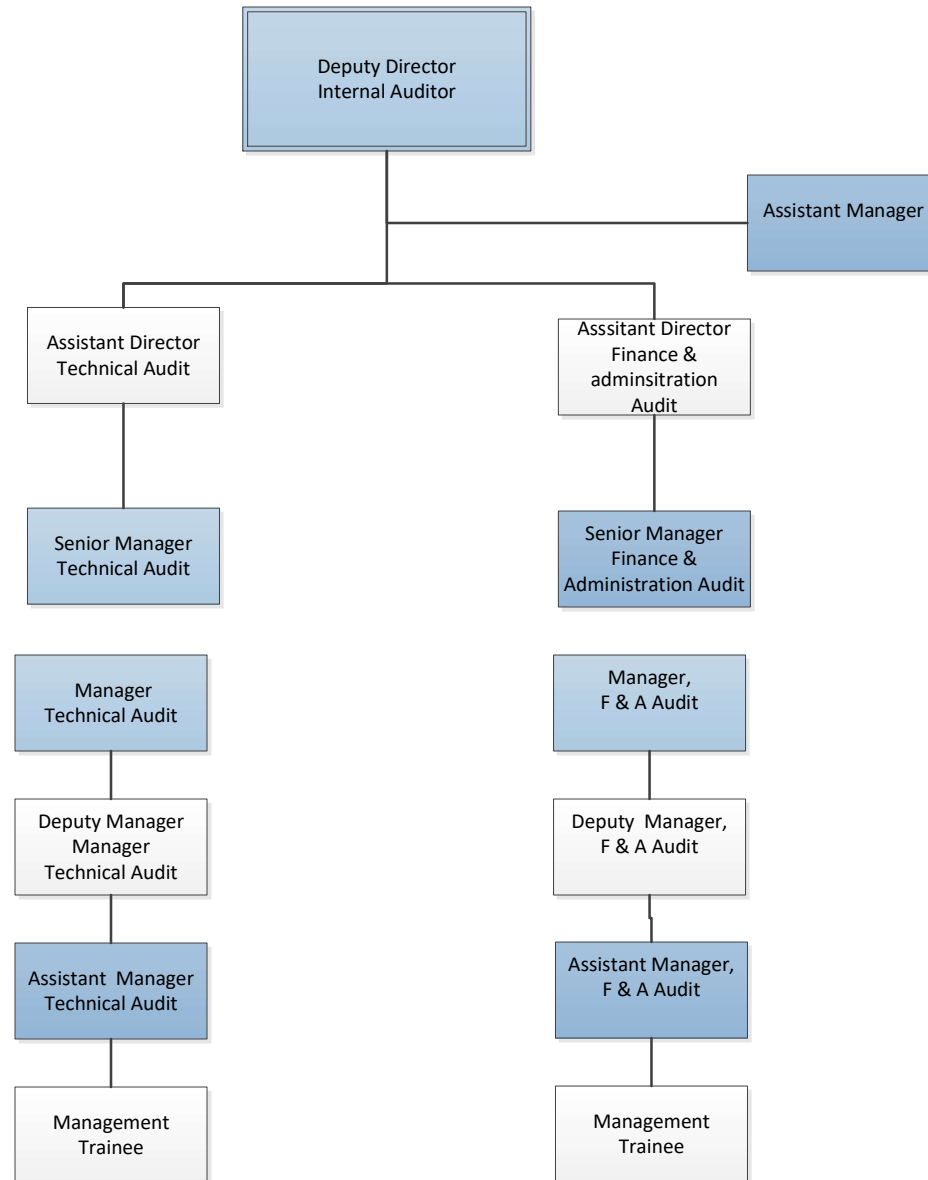


HEAD OFFICE BRANCH

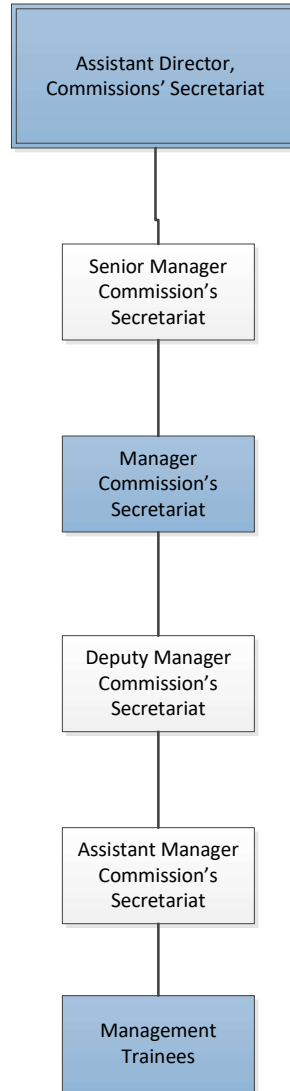


INTERNAL AUDIT

Note: Information
Technology Audit to be
outsourced

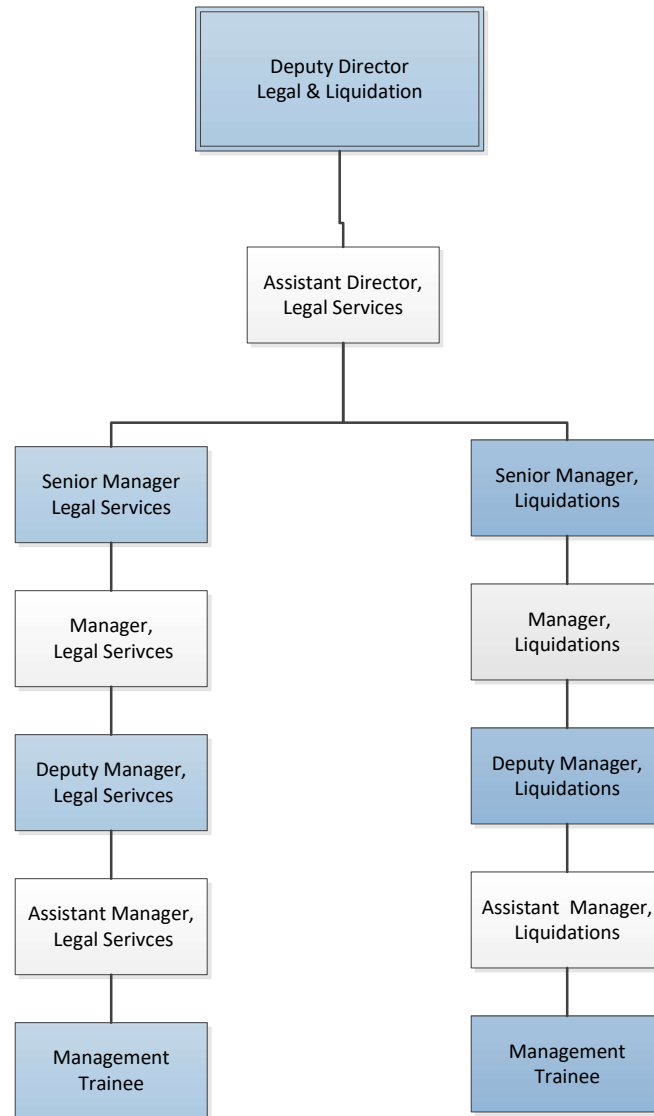


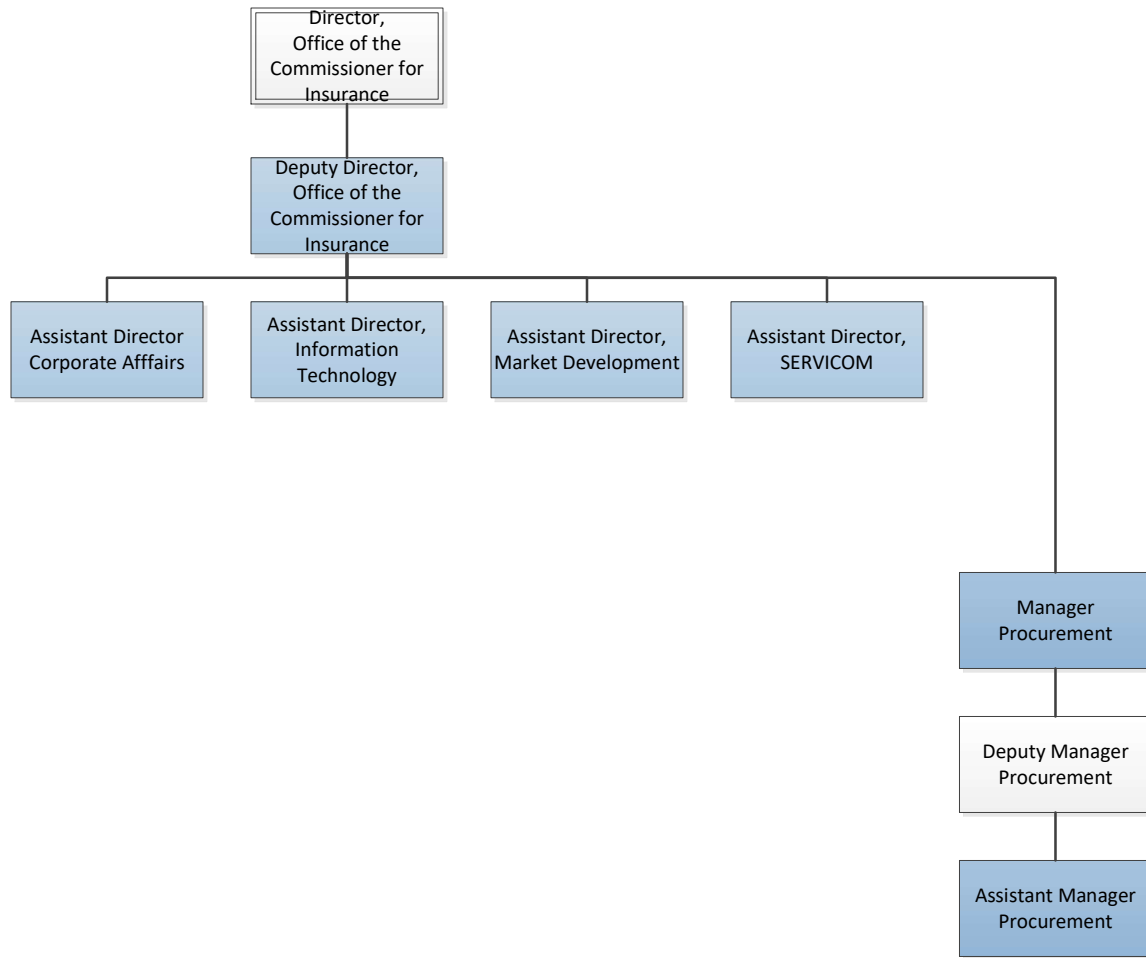
COMMISSION'S SECRETARIAT



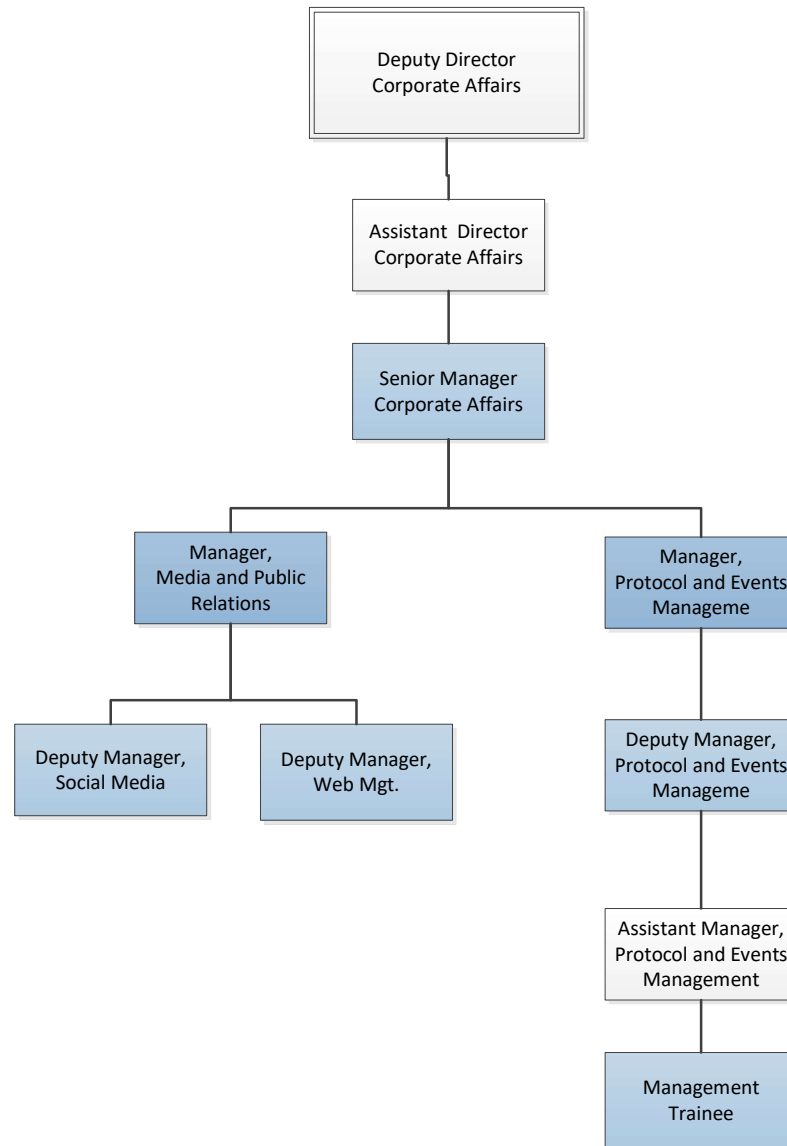
||

LEGAL & LIQUIDATION

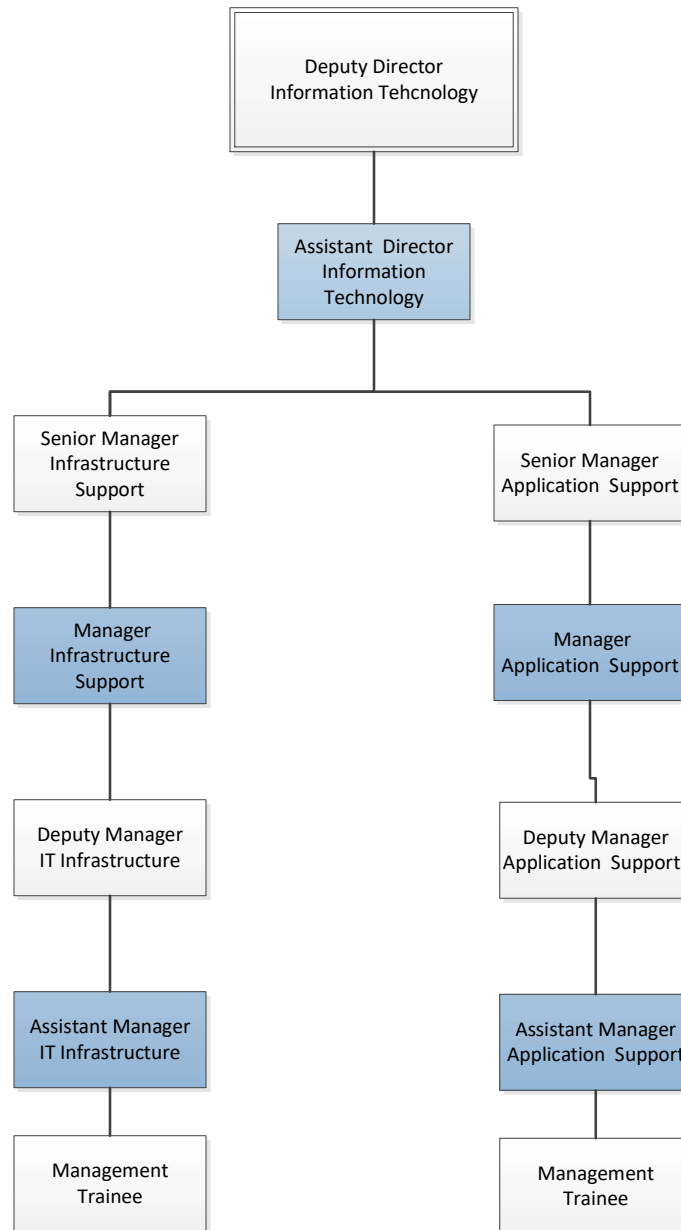




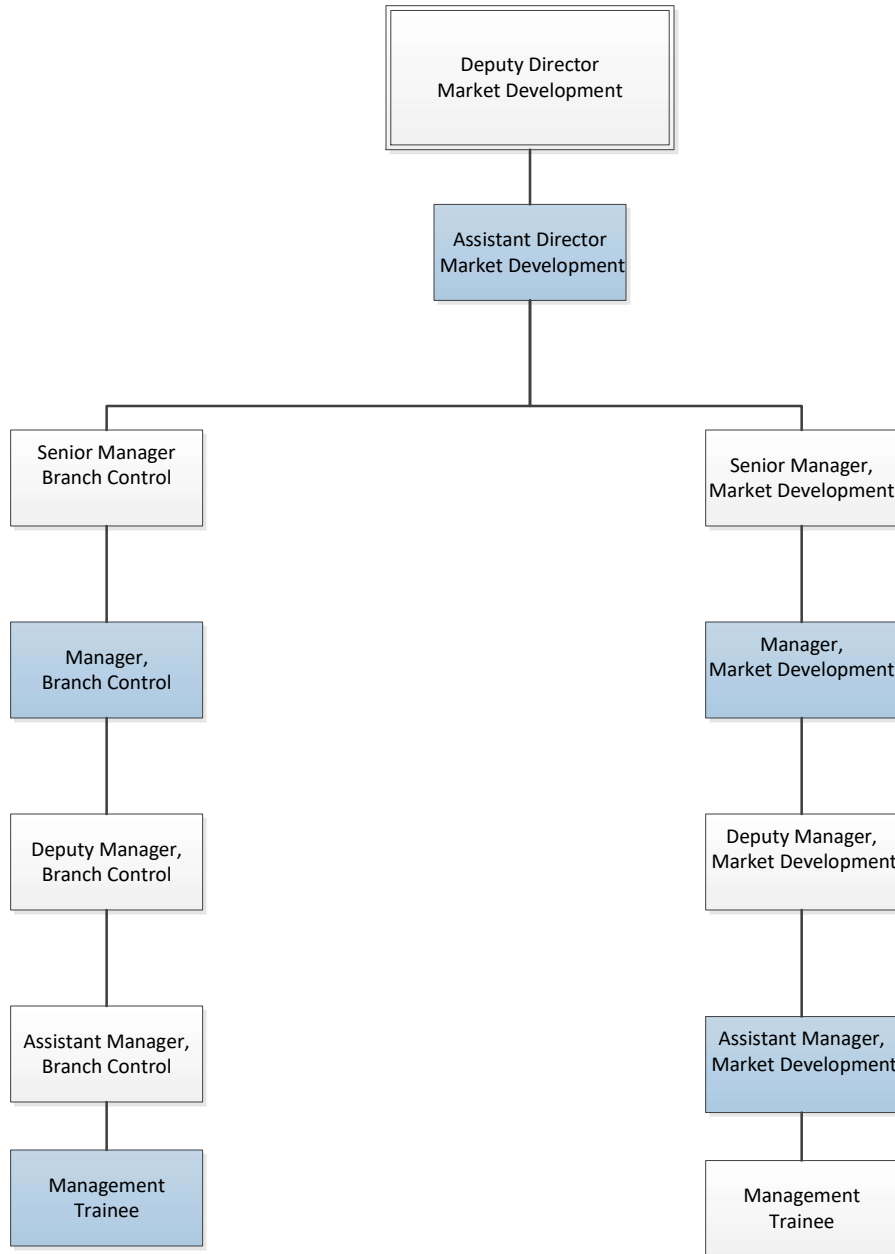
CORPORATE AFFAIRS



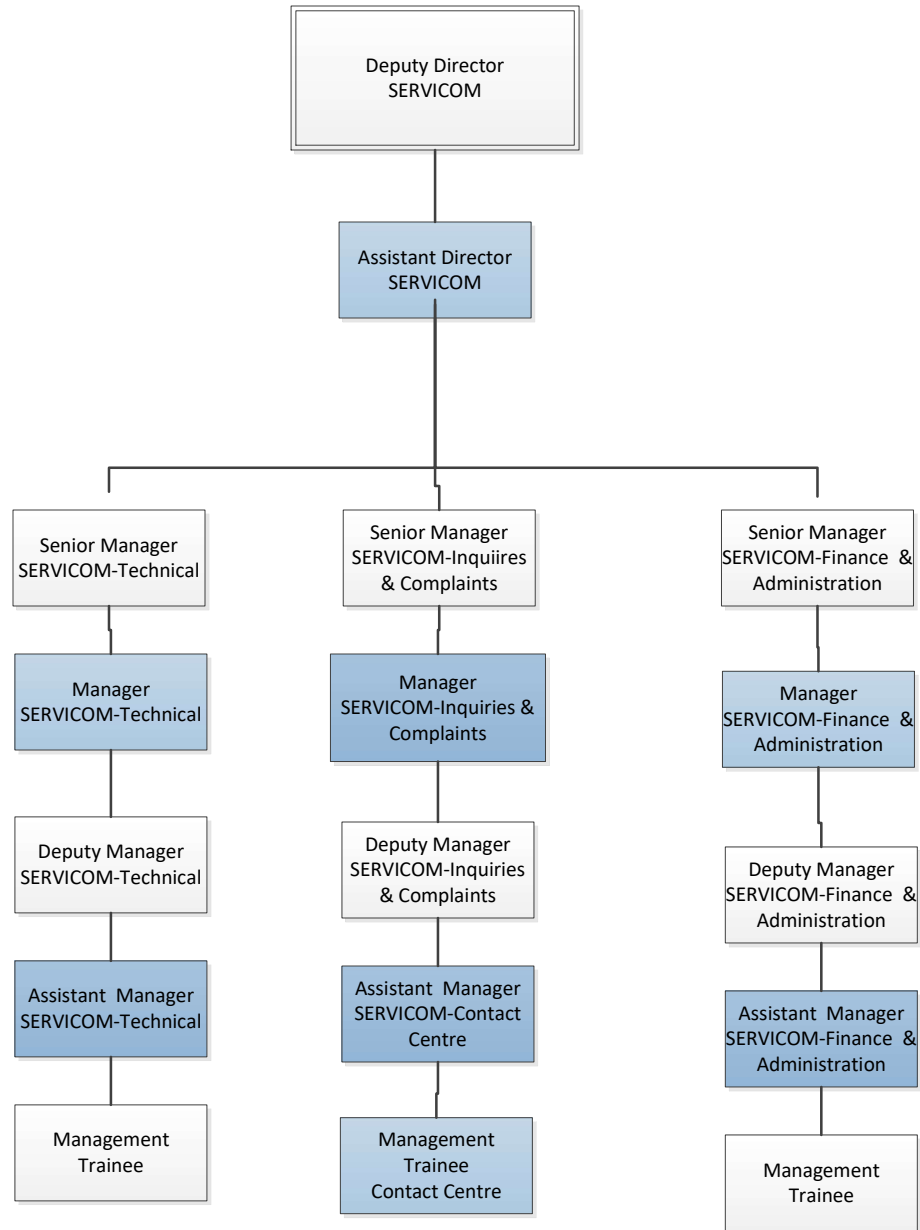
INFORMATION TECHNOLOGY



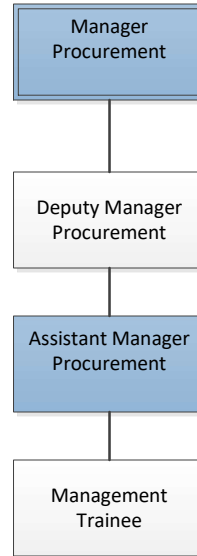
MARKET DEVELOPMENT



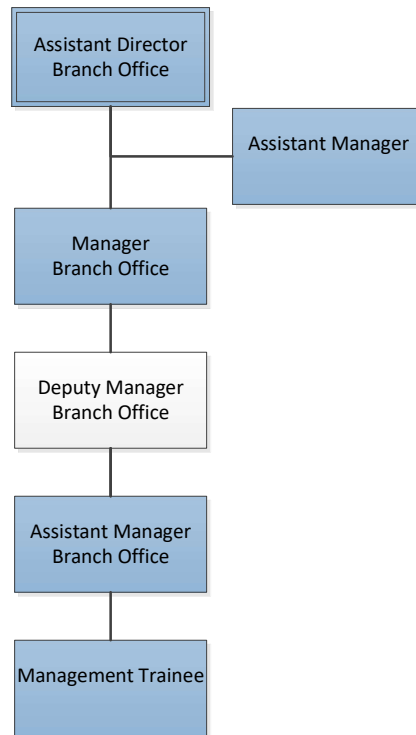
SERVICOM



PROCUREMENT UNIT

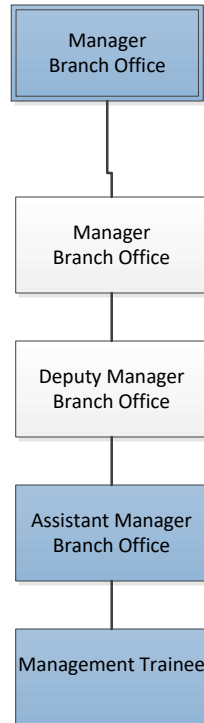


Branch Type A



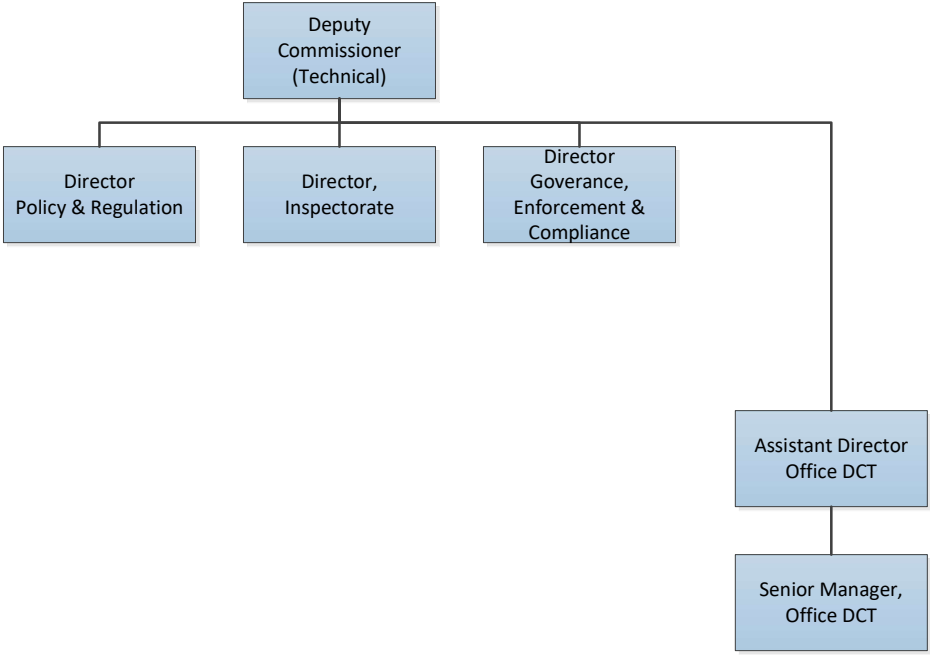
#	Branch Offices	Assistant Director	Senior Manager	Assistant Manager	Management Trainee	Total
1	Kano	1	1	2	1	5
2	Lagos	1	1	2	1	5
3	Port Harcourt	1	1	2	1	5
4	FCT	1	1	2	1	5
	Total	4	4	8	4	20

TYPE B BRANCHES

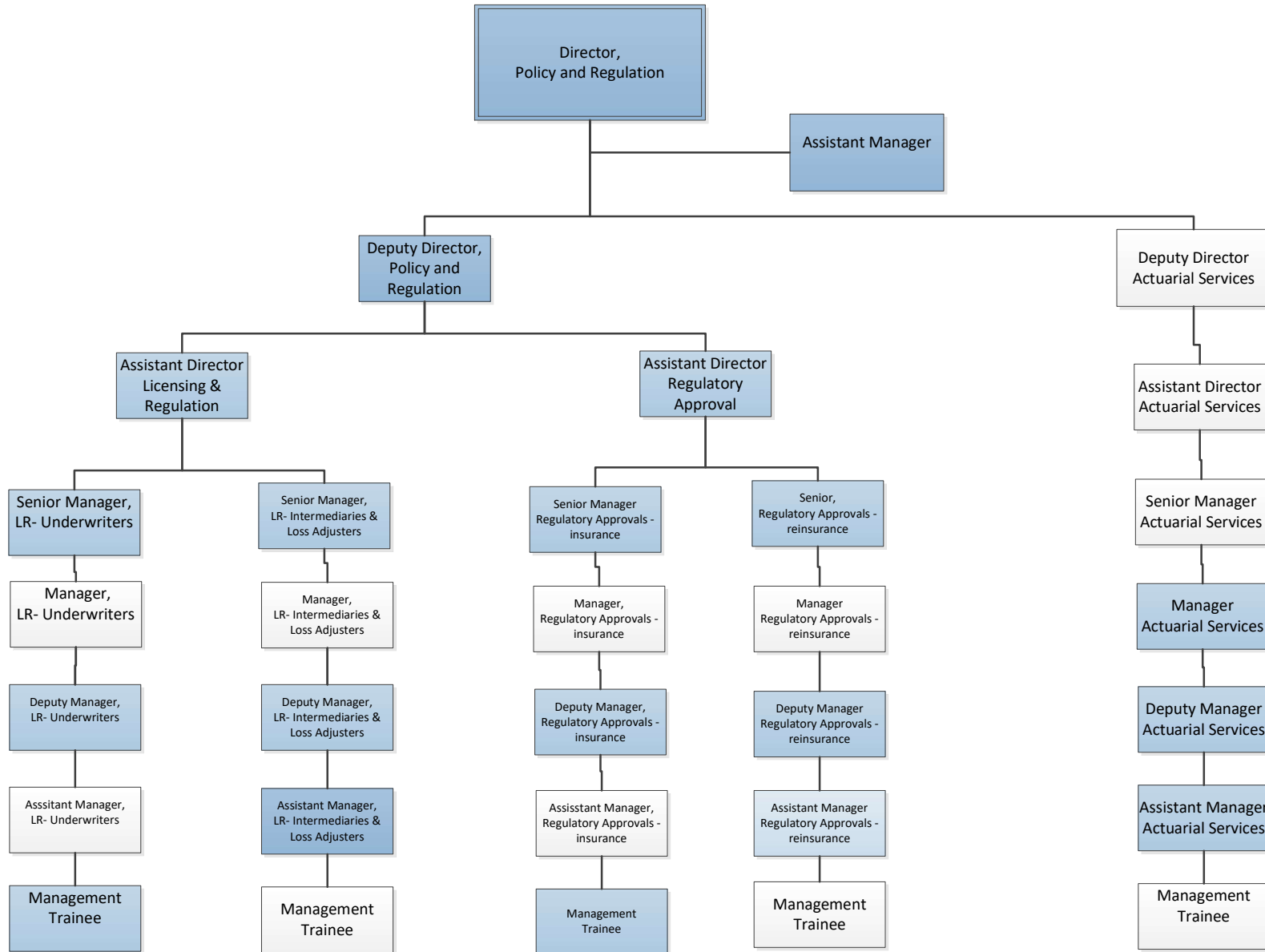


#	Branch Offices	Senior Manager	Assistant Manager	Management Trainee	Total
1	Umuahia	1	1	1	3
2	Yola	1	1	1	3
3	Uyo	1	1	1	3
4	Awka	1	1	1	3
5	Bauchi	1	1	1	3
6	Yenagoa	1	1	1	3
7	Makurdi	1	1	1	3
8	Maiduguri	1	1	1	3
9	Calabar	1	1	1	3
10	Asaba	1	1	1	3
11	Abakaliki	1	1	1	3
12	Benin City	1	1	1	3
13	Ado - Ekiti	1	1	1	3
14	Enugu	1	1	1	3
15	Gombe	1	1	1	3
16	Owerri	1	1	1	3
17	Dutse	1	1	1	3
18	Kaduna	1	1	1	3
19	Katsina	1	1	1	3
20	Birnin Kebbi	1	1	1	3
21	Lokoja	1	1	1	3
22	Ilorin	1	1	1	3
23	Lafia	1	1	1	3
24	Minna	1	1	1	3
25	Abeokuta	1	1	1	3
26	Akure	1	1	1	3
27	Oshogbo	1	1	1	3
28	Ibadan	1	1	1	3
29	Jos	1	1	1	3
30	Sokoto	1	1	1	3
31	Jalingo	1	1	1	3
32	Damaturu	1	1	1	3
33	Gusau	1	1	1	3
		33	33	33	99

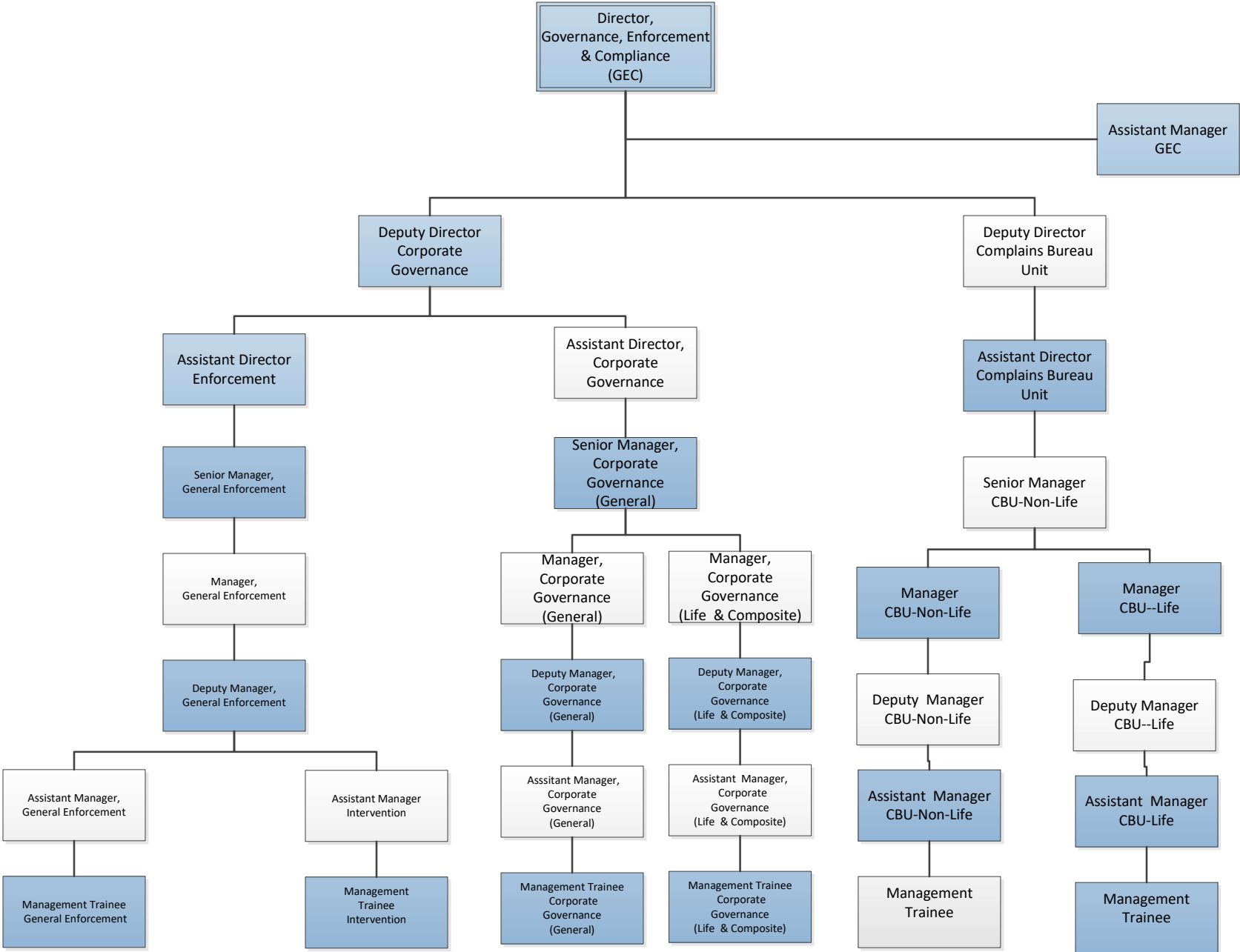
**OFFICE OF DEPUTY
COMMISSIONER FOR
INSURANCE TECHNICAL**

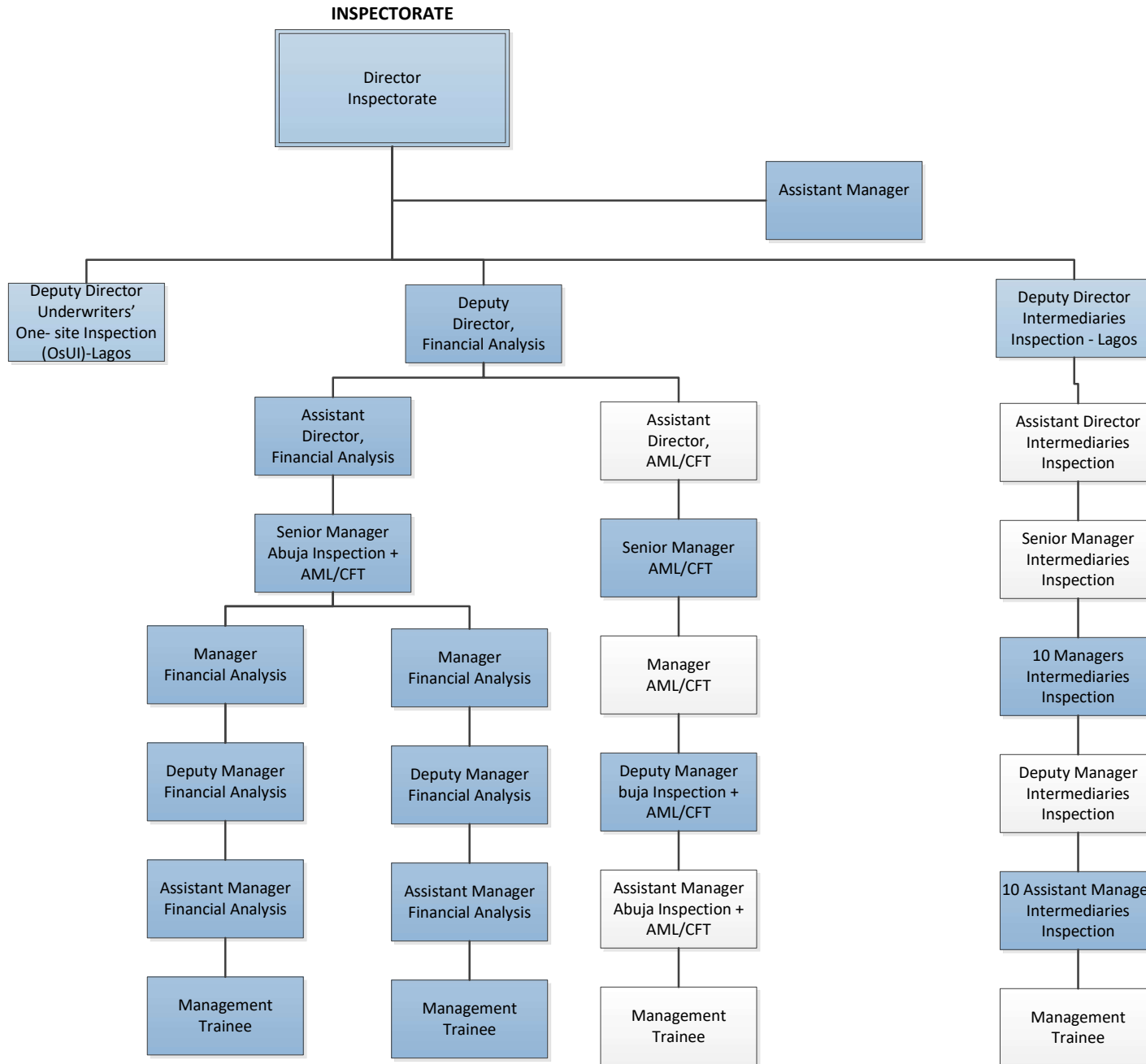


POLICY AND REGULATION



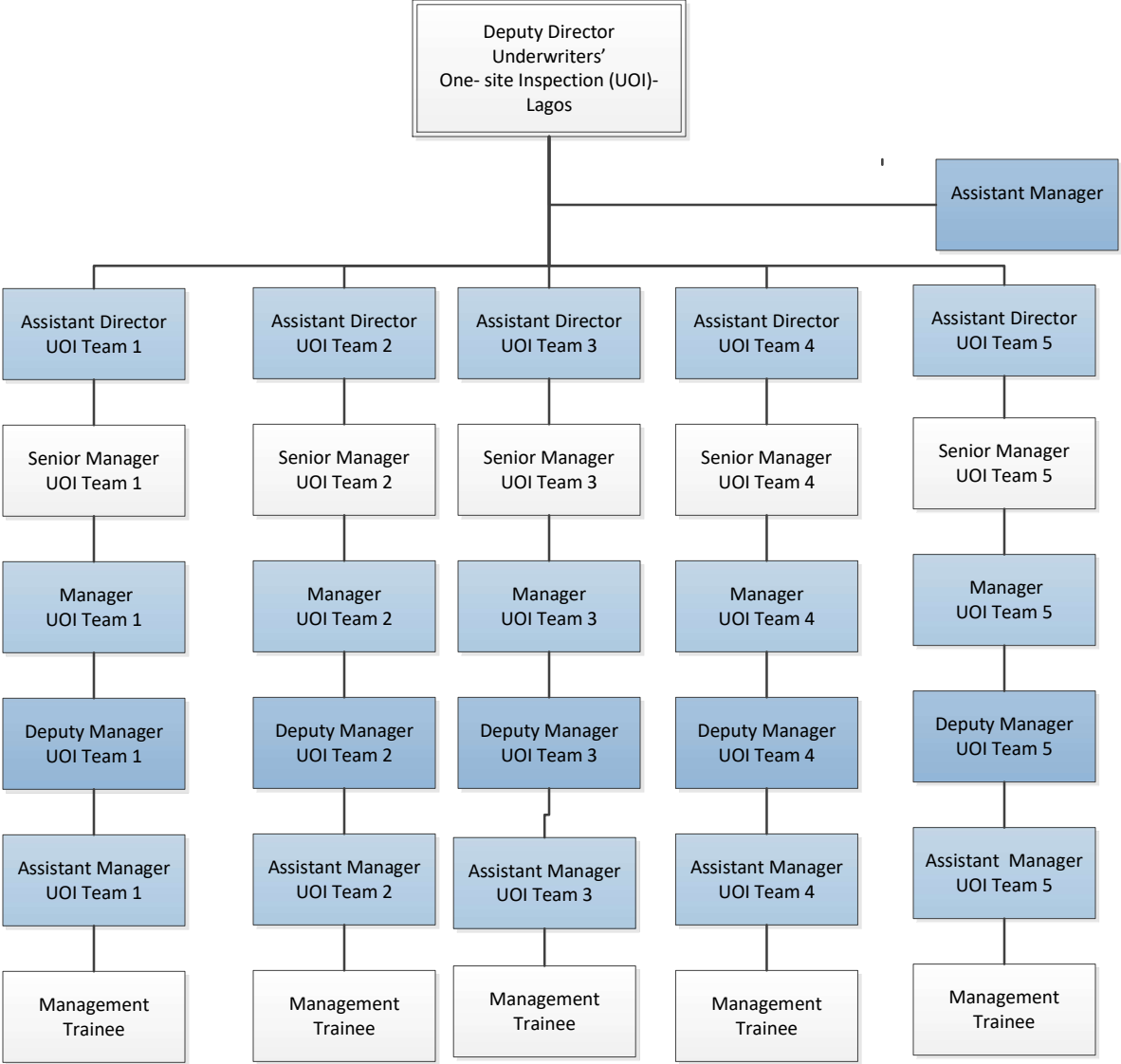
GOVERNANCE, ENFORCEMENT & COMPLIANCE DIRECTORATE



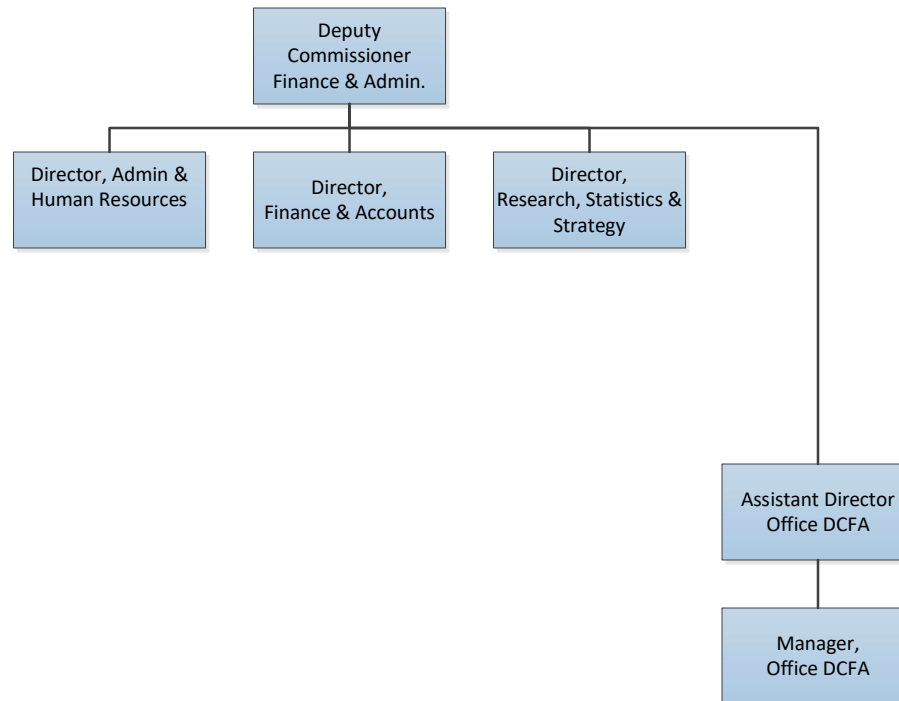


10 Teams of
3

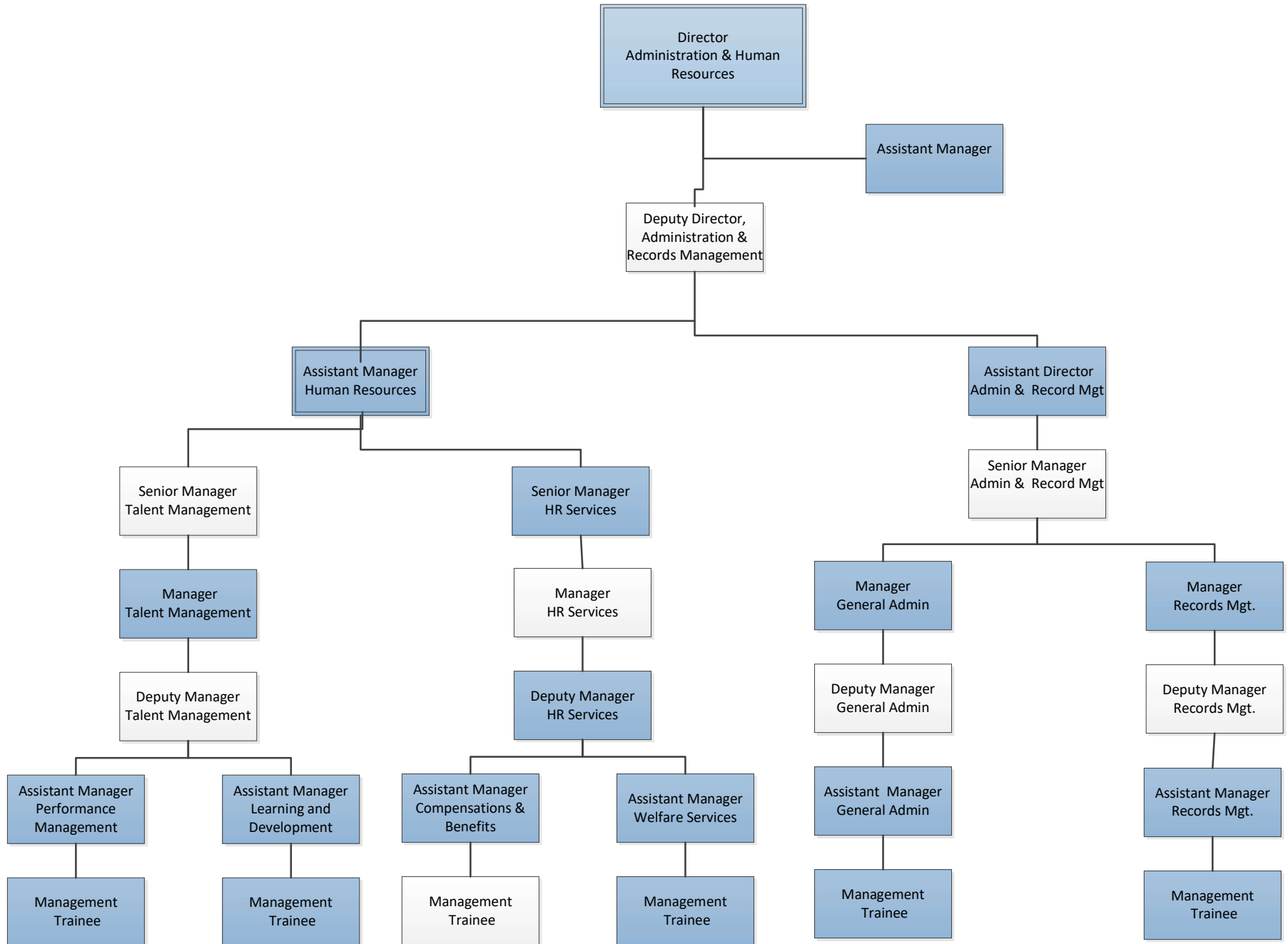
**UNDERWRITER ON SITE
INSPECTION -
IAGOS**



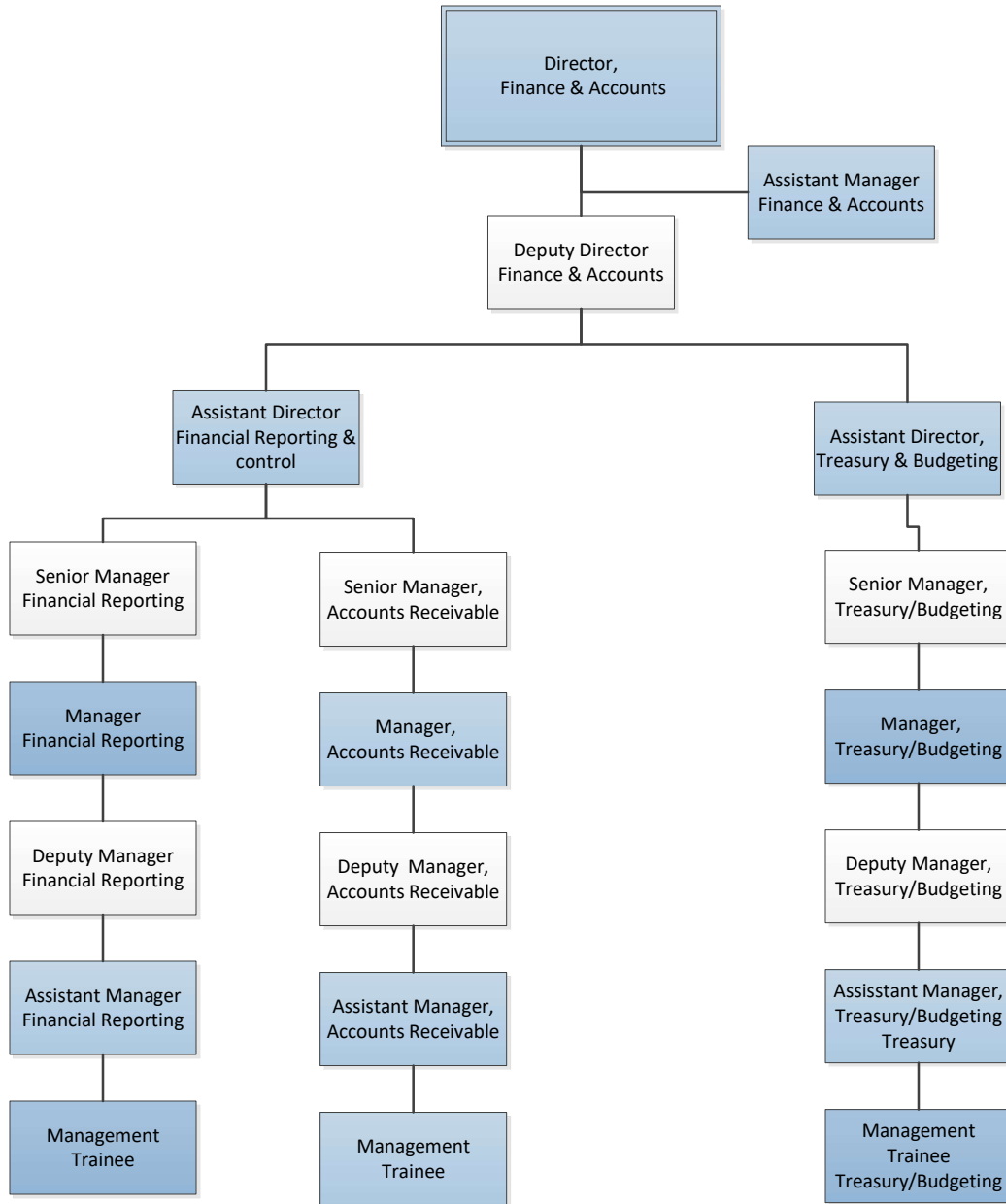
**FINANCE AND
ADMNISTRATION
DIVISION**



ADMINISTRATION & HUMAN RESOURCES



FINANCE AND ACCOUNTS



RESEARCH , STATISTICS & CORPORATE STRATEGY

